

Dear parent/carer,

Welcome back to the new academic year and thank you to everyone who is ensuring their child attends school.

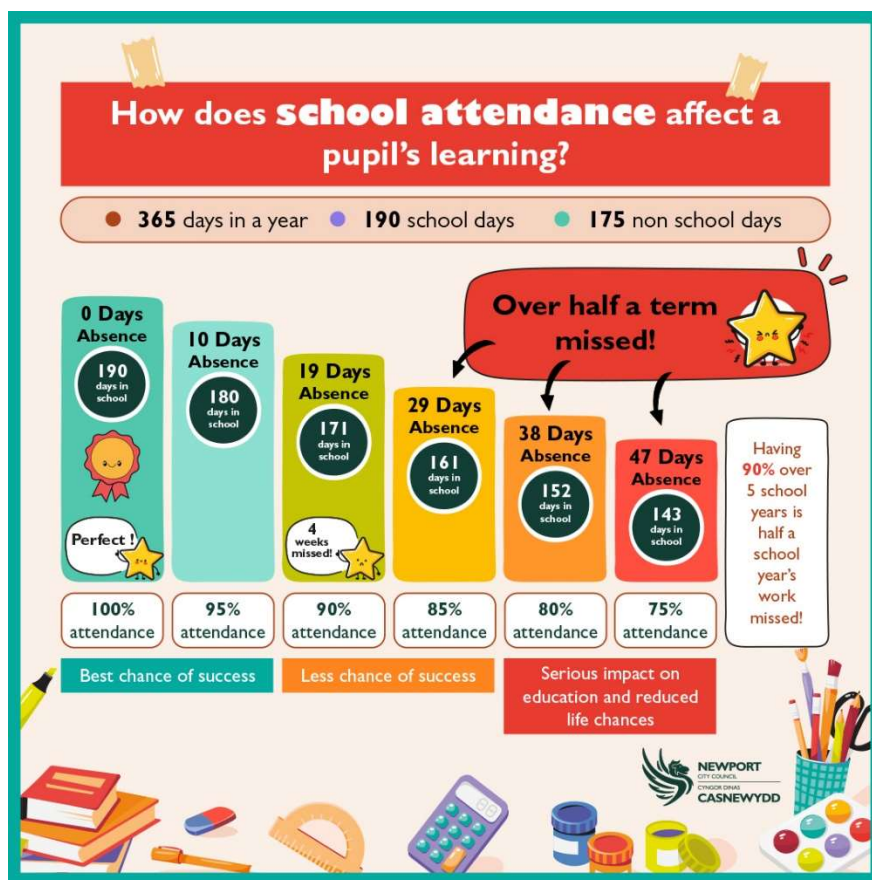
Pupils with low attendance are more likely to fall behind with their work, have gaps in their learning, and therefore, achieve lower examination results. This will affect their life chances for the future.

We all have the responsibility to ensure that our pupils achieve the best start in life, so they can reach their full potential.

A pupil who achieves 90% attendance is still missing out on a significant amount of education.

90% attendance = ½ a day missed every week

90% attendance over 5 years of school = ½ a school year missed



How can the Local Authority support you?

Education Welfare Officers (EWO's) support schools, pupils and parents/carers to encourage children to attend school regularly.

If your child does not attend school regularly, the Headteacher or another member of staff will want to meet with you to discuss the reason for your child not attending school. If attendance continues to be a problem the school may refer to the Education Welfare Service.

What the law says

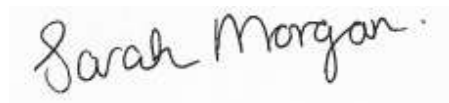
All children of compulsory school age (between 5 and 16) must receive a suitable full-time education. As a parent/carer you are responsible for making sure this happens and you have a vital

role to ensure and encourage regular attendance at school. Most school Governing Bodies have opted to use Fixed Penalty Notices for parents/carers who do not work with the school to support their child in receiving a regular education. The Local Authority expects all schools to work closely with pupils and parents to establish high expectations for attendance.

Lateness

Please ensure that your child arrives at school on time. It can be very stressful to arrive late for school. A pupil arriving late also disrupts lessons for others. Persistent lateness can be classed as unauthorised absence and can be referred to the Education Welfare Service.

Thank you for your ongoing support and partnership with schools and other education settings for the benefit of all pupils. Everyone working in education across Newport City Council wants to help in any way possible to encourage excellent attendance in school, to ensure our young people achieve success.

A handwritten signature in black ink that reads "Sarah Morgan". The signature is written in a cursive style and is enclosed within a light grey rectangular border.

Sarah Morgan

Chief Education Officer

Prif Swyddog Addysg

